



Service & Help

Contact the place of purchase or a Pacvac distributor or service agent.

For details of your nearest Pacvac distributor/service agent contact Pacvac on 08 9479 1444

Revised: October 2009



Superpro 700 series

Commercial Back Pack
Vacuum Cleaners

Support: 08 9479 1444

Please read information manual carefully.
Retain for future reference.

www.pacvac.com

Product & Training Manual



Warranty

Pacvac Pty Ltd warrants all machines and their components which are wholly of their manufacture against faulty material and /or workmanship for a period of 2 years and 1 year on the motor from the date of purchase to the original user and subject to the following conditions:

1. In the case of proprietary components used by Pacvac such as electric motors, switches and the like, Pacvac will pass on a 1 year warranty given by the original manufacturer.
2. This warranty shall not apply to any part of a machine which is expendable, such as but not limited to hoses, electrical lead, carbon brushes, floor tools, bags and filters.
3. No warranty shall apply to any machine or component that has been altered, abused, neglected or modified in any way. Only genuine Pacvac components to be used.
The Company reserves the right to repair or replace parts claimed as faulty at its discretion.
4. The placing upon a Pacvac machine of any attachment or equipment not manufactured or sold by the Company or authorised by it, shall void any warranty.
5. Pacvac shall not in any event be liable for any consequent or contingent loss or damage whatsoever.
6. Labour on any warranty will be covered within the first 12 months. Labour costs on claims after 12 months will be the purchaser's responsibility.
7. Warranty repairs can only be carried out by an authorised Distributor or Service Agent who is a licenced Electrical Contractor and freight costs will be the purchaser's responsibility.

**This Manual applies to the Superpro 700 Series:
Superpro 700, Duo 700, Trans 700, and Micron 700.**

Contents

Important Safety Instructions.....	Page 2
Safety and Maintenance Checks.....	Page 3
Productivity Booster Kit.....	Page 4
Wear Right.....	Page 5
Operate Right.....	Page 6
Work Right	Page 7
Troubleshooting Guide.....	Page 8
Superpro 700 Parts Profile.....	Page 9
Superpro Duo 700 Parts Profile.....	Page 10
Superpro Trans 700 Parts Profile.....	Page 11
Superpro Micron 700 Parts Profile.....	Page 12
Superpro Harness and Accessories.....	Page 13
Notes.....	Page 14
International Authorised Distributors.....	Page 15

1. Important Safety Instructions

1. Read the Product Manual before using the back pack and always follow the Safety and Maintenance Instructions.
2. Do not unplug the back pack while it is turned on. Turn the switch OFF – then unplug.
3. Do not leave the back pack when plugged in. Unplug from the power point when not in use and before servicing.
4. Do not use outdoors or in wet conditions.
5. Use only the Manufacturer’s recommended attachments.
6. Regularly check the power cord for damage, such as cuts, abrasions, exposed wiring or aging. If the power cord or plug is damaged, the complete power cord must be replaced by your local Authorised Pacvac Service Agent in order to avoid a hazard. Only replace the power cord with the same specifications.
7. If the back pack has been dropped, damaged, left outdoors or dropped into water, return it to your local Authorised Pacvac Service Agent for a safety check.
8. Do not unplug the power cord by pulling on the power cord only. To unplug, grasp the plug and pull gently.
9. Do not handle the back pack, power cord or plug with wet hands.
10. Do not use the back pack to pick up flammable or combustible liquids, such as petrol etc., and do not use in areas where they may be present.
11. The standard back pack is not suitable for picking up hazardous dust (Pacvac are able to provide specific equipment for this use).
12. Do not vacuum anything that is burning or smoking such as cigarettes or hot ashes.
13. Do not use the back pack without the dust bag and filters in place.
14. Store the appliance indoors. Put away after use to prevent tripping accidents.

15. This appliance is not intended for use by persons (including children) with reduced physical, sensory or mental capabilities, or lack of experience and knowledge, unless they have been given supervision or instruction concerning use of the back pack by a person responsible for their safety. Children should be supervised to ensure that they do not play with the appliance.
16. This appliance has an “A” weighted noise level of 74dBa.



Meaning of crossed – out wheeled dustbin:

Do not dispose of electrical appliances as unsorted municipal waste, use separate collection facilities. Contact your local government for information regarding the collection systems available. If electrical appliances are disposed of in landfills or dumps, hazardous substances can leak into the groundwater and get into the food chain, damaging your health and wellbeing.

Europe Only - When replacing old appliances with new ones, the retailer is legally obligated to take back your old appliance for disposals at least free of charge.

RETAIN THESE SAFETY INSTRUCTIONS FOR FURTHER USE.

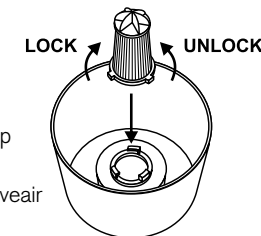
2. Safety and Maintenance Checks

DAILY

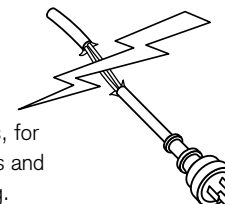
1. Remove, empty and clean dust bag.



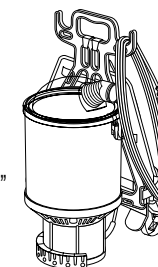
2. Remove and tap gently to clean Hypercone Activeair filter.



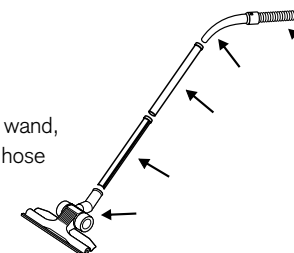
3. Check all electrical leads, for cuts, abrasions and exposed wiring.



4. Wind up cable from machine end. Store cable on “hook” on frame.

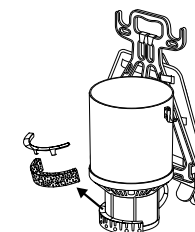


5. Check the floor tool, wand, bent hand piece and hose for any obstructions.



WEEKLY

- Remove and clean external motor filter.



NOTE: Any other servicing should be performed by an authorised & licensed technician.

3. Productivity Booster Kit

Productivity Booster Kit

Well trained cleaners are more productive, healthier cleaners. Our Productivity Booster Kit has high Occupational Health and Safety compliance and ensures over 700 square metres per hour are cleaned - resulting in a tidy profit.

In addition to the on-machine Safety and Maintenance labelling and this Product Manual the following kit is available FREE on request:



Training DVD



Training Resources Pack



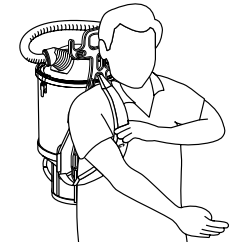
A3 Safety and Maintenance Poster

For further information on the Productivity Booster Kit please visit our website at www.pacvac.com

4. Wear Right

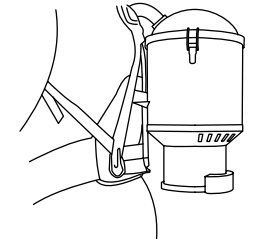
Step 1:

Loosen the shoulder straps. Lift the back pack by one shoulder strap and then slide your free arm into the other strap.



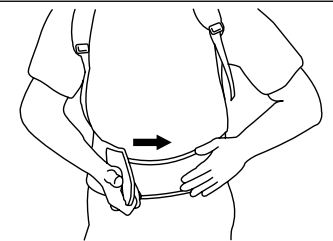
Step 2:

Make sure the harness is resting on your hips.



Step 3:

Tighten the waist band so the machine rests comfortably on your hips.



Step 4:

Pull down on the shoulder straps and do up cross strap to secure back pack.

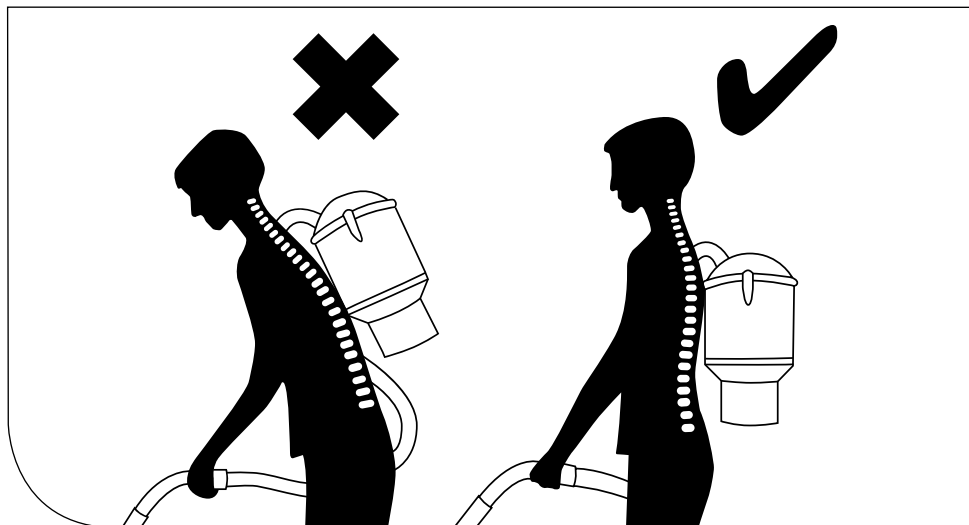


NOTE: Rotate the clear dome lid so the vacuum inlet is on either the left or right side to suit left or right hand vacuuming.

5. Operate Right

How to vacuum easier and faster with no back strain:

1. Stand upright, with the bent hand piece section parallel to the floor.
2. Hold the bent hand piece with one hand at a comfortable arm's length.
3. Move forward and away from the power point.
4. Use easy underarm swinging motion when detail cleaning and short dabs when spot cleaning, always standing upright.
5. Once the end of the power cord has been reached and work completed, return to the power point along the power cord line and disconnect the power cord from the power point.
6. If work not completed move to the next area, connect power cord to the nearest power point and repeat steps 1 through 6.
7. If work completed disconnect power cord from power point then wind from the back pack towards the end of the power cord to reduce likelihood of cable twists, fractures and knots.
8. Remove back pack by sliding the left strap off the shoulder, while raising right arm/shoulder to hold strap in place. Slowly lower the right shoulder and lower the back pack to the floor. Do not drop.



6. Work Right

LOOK AT THE LAYOUT (refer to the Fishbone Method below)

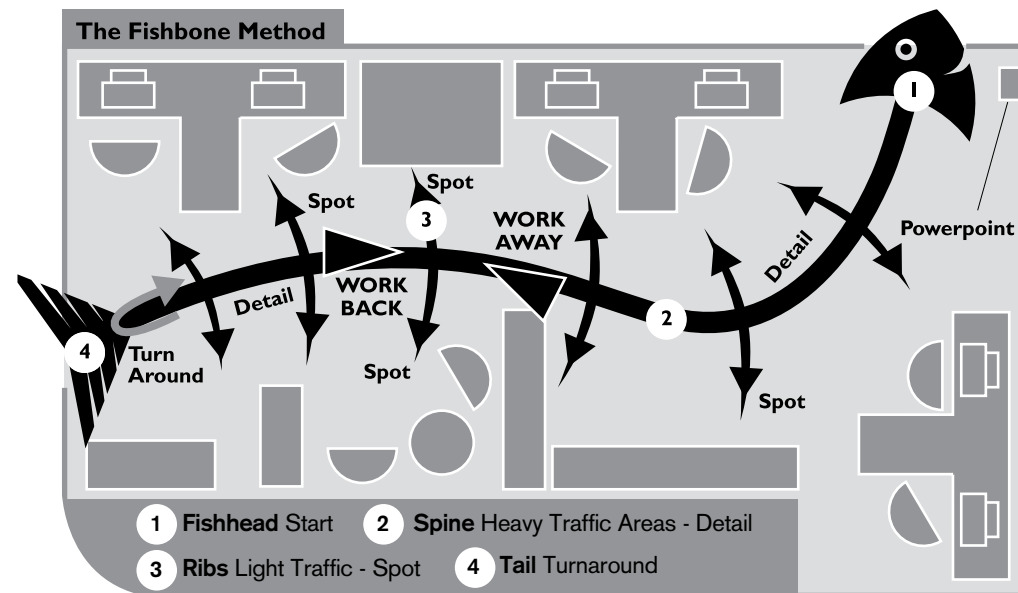
1. Find the most easily located power point. This is your starting location at the fish's head. Your turnaround is the 'tail'.
2. Check the room layout (position of desks, tables, chairs, fittings etc.)
3. Check the condition of the floor - how dirty it is on a scale of 10.

PLAN THE PROCESS

1. See in your mind the fishbone method over the entire area or room to be cleaned.
2. Decide which areas are to be detail cleaned (the spine), or spot cleaned (the ribs).

CLEAN SMARTER

1. Work away from the power point.
2. Work one side of the fishbone towards tail. Then back the other side towards head.
3. Work to the plan - long strokes for the detail clean area and short dabs for the spot cleans.



7. Troubleshooting

WARNING: TO REDUCE RISK OF PERSONAL INJURY, UNPLUG BACK PACK BEFORE ATTEMPTING TO SOLVE PROBLEM OR WHEN SERVICING

PROBLEM: Back Pack not working

Cause:	Power cord not firmly plugged into power point
Solution:	Plug power cord into power point firmly.
Cause:	Power cord not firmly plugged into short lead.
Solution:	Plug power cord firmly into short lead.
Cause:	Back pack shuts off due to high motor temperature.
Solution:	Turn main switch off and unplug the back pack. Ensure the dust bag, Hypercone Activeair filter and exhaust filter are clean. Inspect the wand, hose and floor tool and remove any blockages. After 30 minutes the back pack should be ready for use. If not contact the number below for your nearest Authorised Pacvac Service Agent.

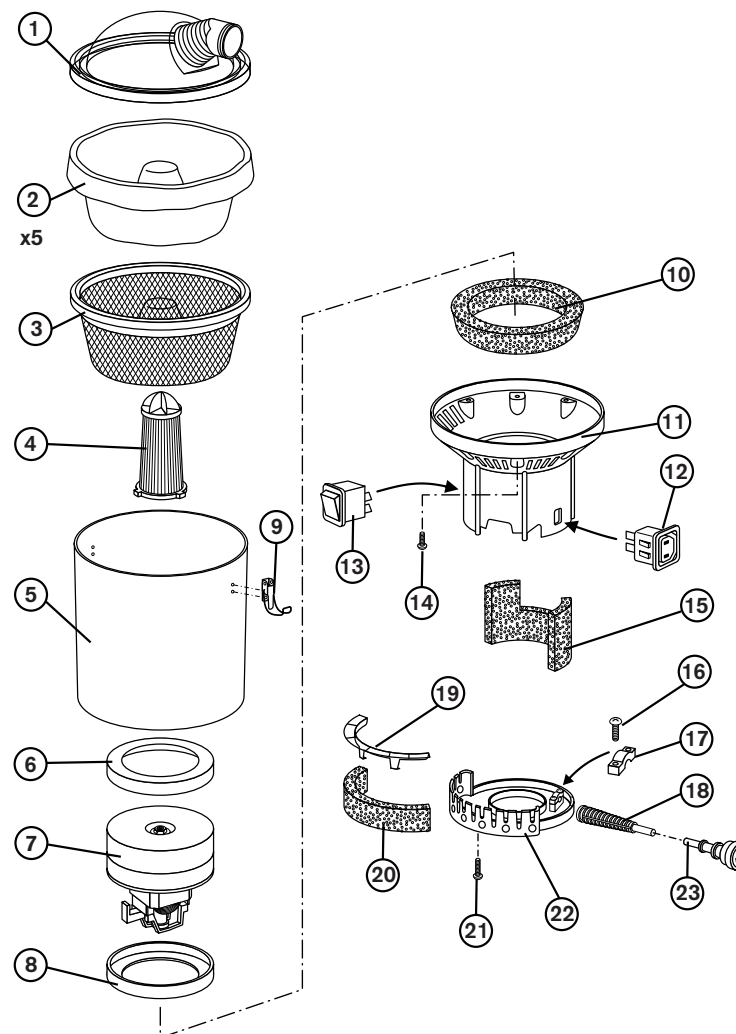
PROBLEM: Back Pack has no/poor suction

Cause:	Dust bag full.
Solution:	Remove, empty and clean dust bag.
Cause:	Dust bag not installed correctly.
Solution:	Remove and empty dust bag making sure the rubber edging is correctly fitted around the canister.
Cause:	Hose not installed correctly.
Solution:	Reconnect hose and ensure correctly sealed.
Cause:	Blockages.
Solution:	Remove hose, wand and floor tools; remove any blockages.
Cause:	Filters blocked.
Solution:	Clean Hypercone Activeair filter and external motor filter.

SERVICE REQUIREMENTS

Servicing of the back pack is recommended the earlier of every 200 hours of use or at least once a year. Should you require the details of your local Authorised Pacvac Service Agent or have any other queries please contact us on 08 9479 1444 or sales@pacvac.com
For international distributors refer to the back cover of this Product Manual or visit our website at www.pacvac.com

8. Parts Profile - *Superpro 700*

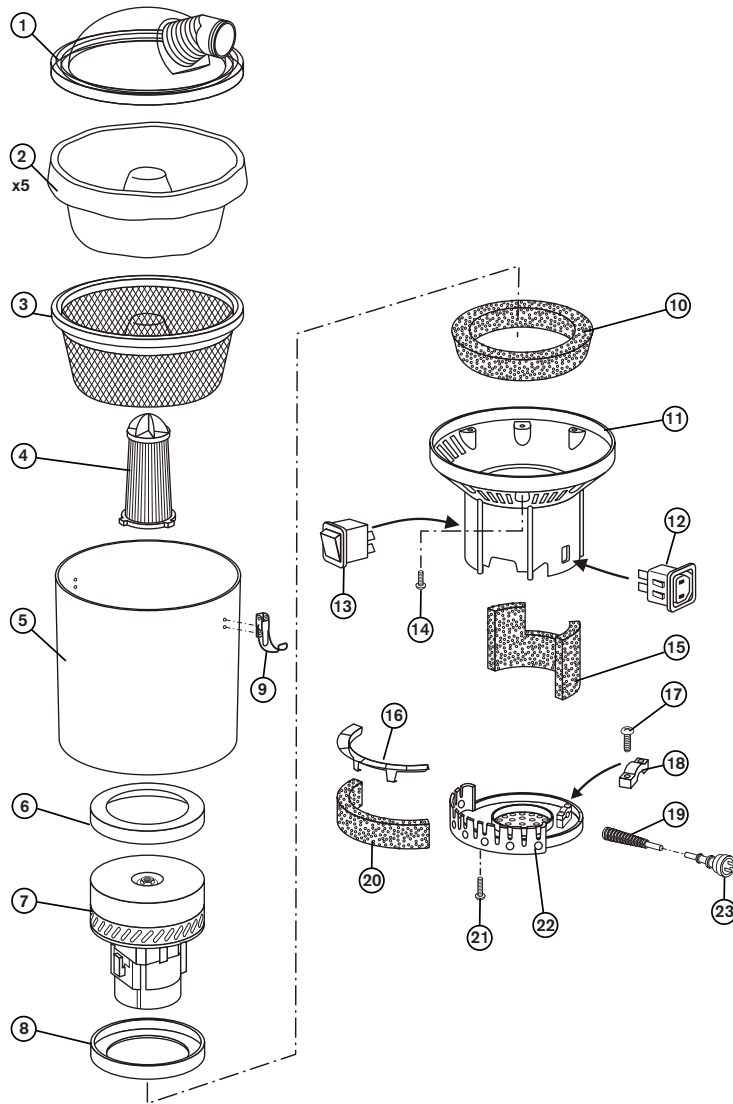


Hypercone™ Air Flow System
Motor Type: 2 Stage Flow Thru
220-240 volts
50 Hertz
1000 Watts + 200 Watts Outlet
4-5 Amps

Quote these part numbers when ordering spare parts

No.	Part Name	Part No.
1.	Top dome lid	KC251
2.	Hypercone paper bag	AF101
3.	Dust bag	KC502HC
4.	Hypercone hepa filter	KC270
5.	Main vacuum canister	KC252
6.	Motor gasket	KC253
7.	1000w Motor flow thru (240v)	UP118
8.	Motor gasket	KC253
9.	Toggle latch	KC131
10.	Intermediate noise insulation	PV254
11.	Intermediate housing	KC256
12.	Power outlet	KC257
13.	Switch	VS261
14.	Screw 5x20 (plastite)	PV298
15.	Noise insulation (motor)	PV255
16.	Screw 3x12 (plastite)	PV299
17.	Cable clamp	KC262
18.	Mains cable lead (short)	KC109SLM
19.	Motor filter cage	KC264
20.	External motor filter	PV259
21.	Screw 6x25	
22.	Bottom cap	KC258
23.	Extension lead	KC111/18
	Mains cable lead:	
	AU, NZ, ZA	KC111/18
	UK, SG, IN, AE	UP10&J/UK
	US, JP	UP109USA

9. Parts Profile - **Superpro duo700**

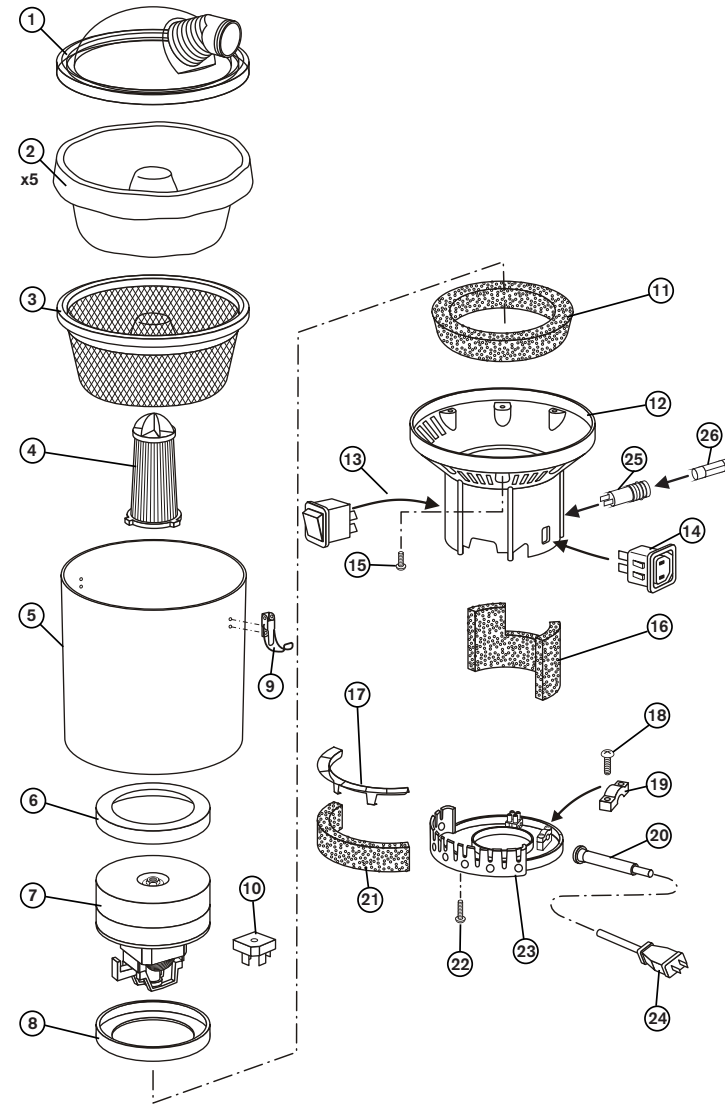


Hypercone™ Air Flow System
 Motor Type: 2 Stage By Pass
 220-240 volts
 50 Hertz
 1000 Watts + 200 Watts Outlet
 4-5 Amps

Quote these part numbers when ordering spare parts

No.	Part Name	Part No.
1.	Top dome lid	KC251
2.	Hypercone paper bag	AF101
3.	Dust bag	KC502HC
4.	Hypercone Activeair filter cartridge	KC270
5.	Main vacuum canister	KC252
6.	Motor gasket	KC253
7.	1000w Motor bypass (240v)	HV1208
8.	Motor gasket	KC253
9.	Toggle latch	KC131
10.	Intermediate noise insulation	PV254
11.	Intermediate motor housing	KC256
12.	Power outlet	KC257
13.	Switch	VS261
14.	Screw 5x20 (plastite)	PV298
15.	Noise insulation (motor)	PV255
16.	Motor filter cage	KC264
17.	Screw 3x12 (plastite)	PV299
18.	Cable clamp	KC262
19.	Mains cable lead (short)	KC109SLD
20.	External motor filter	PV259
21.	Screw 6x25	
22.	Bottom cap (Duo 700)	KC258D
23.	Extension lead	KC111/18

10. Parts Profile - **Superpro trans700**

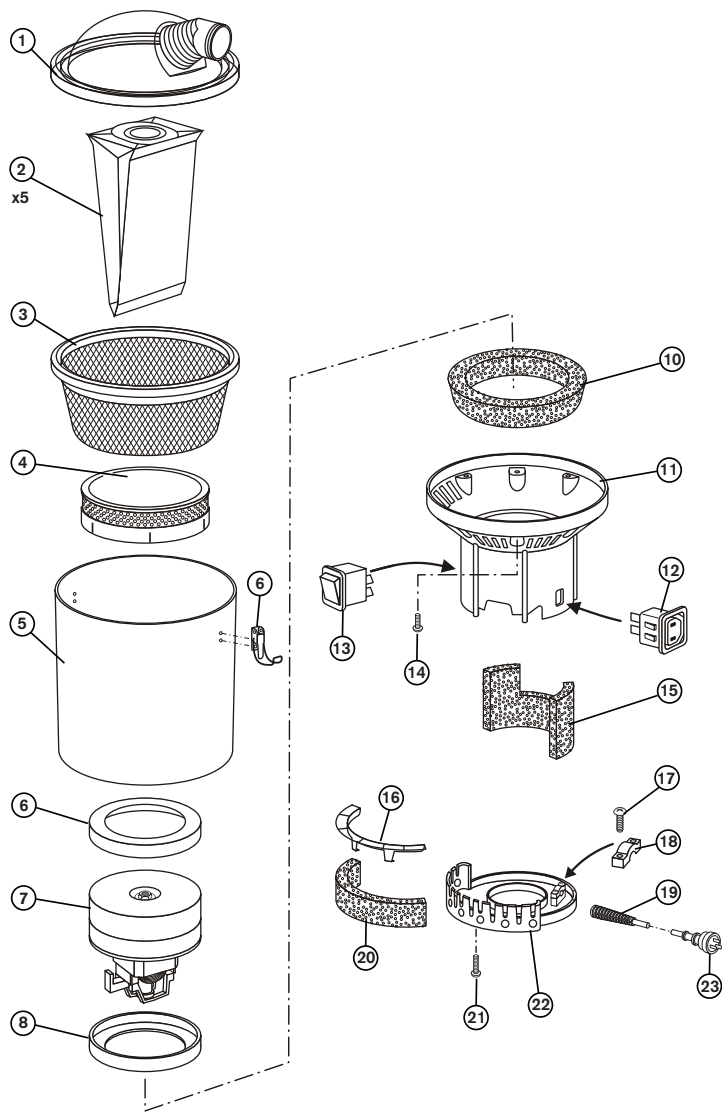


Hypercone™ Air Flow System
 Motor Type: 2 Stage Flow Thru
 120 volts
 400 Hertz
 650 Watts + 200 Watts Outlet
 5-6 Amps
 Fuse: Time-lag 10 Amp 250VAC

Quote these part numbers when ordering spare parts

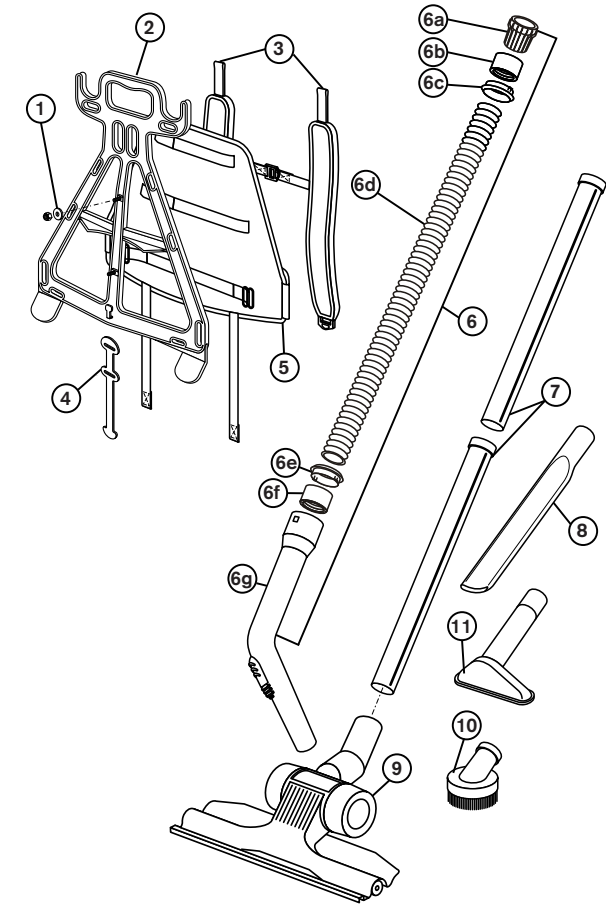
No.	Part Name	Part No.
1.	Top dome lid	KC251
2.	Hypercone paper bag	AF101
3.	Dust bag	KC502HC
4.	Hypercone Activeair filter cartridge	KC270
5.	Main vacuum canister	KC252
6.	Motor gasket	KC253
7.	1000w Motor flow through (110v)	UP243
8.	3mm Motor gasket	KC253A
9.	Toggle latch	KC131
10.	Bridge rectifier	UP246
11.	Intermediate noise insulation	PV254
12.	Intermediate motor housing	KC256
13.	Switch	VS261
14.	Power outlet	KC257
15.	Screw 5x20 (plastite)	PV298
16.	Noise insulation (motor)	PV255
17.	Motor filter cage	KC264
18.	Screw 3x12 (plastite)	PV299
19.	Cable clamp	KC262
20.	Cable grommet	KC406
21.	External motor filter	PV259
22.	Screw 6x25	
23.	Bottom cap	KC258
24.	Cable	UP109USA
25.	Fuse holder	KC260
26.	Fuse T10A	KC260F

11. Parts Profile - Superpro micron700



- Hypercone™ Air Flow System
 Motor Type: 2 Stage Flow Thru
 220-240 volts
 50 Hertz
 1000 Watts + 200 Watts Outlet
 4-5 Amps
- Quote these part numbers when ordering spare parts
- | No. Part Name | Part No. |
|------------------------------------|----------|
| 1. Top dome lid | KC251 |
| 2. Paper bag | KC287 |
| 3. Dust bag | PV502 |
| 4. Hepa Filter | KC288 |
| 5. Main vacuum canister | KC252 |
| 6. Motor gasket | KC253 |
| 7. 1000w Motor flow through (240v) | UP118 |
| 8. Motor gasket | KC253 |
| 9. Toggle latch | KC131 |
| 10. Intermediate noise insulation | PV254 |
| 11. Intermediate motor housing | KC256 |
| 12. Power outlet | KC257 |
| 13. Switch | VS261 |
| 14. Screw 5x20 (plastite) | PV298 |
| 15. Noise insulation (motor) | PV255 |
| 16. Motor filter cage | KC264 |
| 17. Screw 3x12 (plastite) | PV299 |
| 18. Cable clamp | KC262 |
| 19. Mains cable lead (short) | KC109SLM |
| 20. External motor filter | PV259 |
| 21. Screw 6x25 | |
| 22. Bottom cap | KC258 |
| 23. Extension lead | KC111/18 |

12. Superpro 700 Series Harness, Accessories & Optional Extras



- | No. Part Name | Part No. |
|--|----------|
| 1. Bolt 5x20
Nut 5mm nyloc
Washers 3/16 x3/4
& 3/16 x7/16 | |
| 2. Frame | KC120 |
| 3. Shoulder strap | KC121 |
| 4. Cord restraint | KC268 |
| 5. Back support, Padding and waist straps | KC263 |
| 6. Vacuum hose complete | KC320 |
| 6a. Machine end connector | KC200 |
| 6b. Hose cuff hull | UA914 |
| 6c. Hose clip ring | UA915 |
| 6d. Vacuum hose | KC350 |
| 6e. Hose clip ring | UA915 |
| 6f. Hose cuff hull | UA914 |
| 6g. Bent hand piece | KC330 |
| 7. Two piece wand | KC909/2 |
| 8. Crevice tool | KC911 |
| 9. Combination floor tool with wheels | UA908W |
| 10. Dusting brush | KC910 |
| 11. Upholstery tool | KC912 |

OPTIONAL EXTRAS	
Part No. KC928 Powerhead set complete	Part No. KC909 Extendable wand
NOTE: Not suitable for commercial use	

Part No. UA908 Combination floor tool 	Part No. UA9272 Bottom plate to suit combination floor tool 	Part No. UA917H All purpose floor tool
Part No. UP112PB Plug in RCD adaptor 	Part No. UA926 Turbo head 	Part No. UA913M Metal bent hand piece

14. Notes**14. International Authorised Distributors****SOUTH AFRICA**

Industro Clean (Western Cape)
1490 Zeiss Road
Lazer Park
Honeydew
South Africa 2125
Ph: + 27 11 794 2000
Fax: + 27 11 794 3504
Email: sales@wetrok.com.za

UNITED KINGDOM

TML International Ltd
Woodlands
Copmanthorpe Grange
Copmanthorpe
York YO23 3TN
United Kingdom
Ph: +44 (0) 1904 744790
Fax: +44 (0)1904 744010
Email: ray@tmlint.com
tmlint.com@talktalk.net

INDIA

Inventa Cleantec Pvt Ltd
C31 Sector 63
NOIDA
Distt. Gautam Budh Nagar 201301
INDIA
Ph: + 91 120 2401086
Fax: + 91 120 2401087

JAPAN

BI Corporation
6-62-12 Shibayama
Funabashi-shi, Chiba-Ken
Japan
Ph: + 81 474 64 1462
Fax: + 81 474 64 1477

NEW ZEALAND

Proquip Wholesale
47 Fitzherbert Street,
Petone NZ
Ph: + 64 4 566 7847
Fax: + 64 4 939 2525

SINGAPORE – Product: TYPHOON 105

Klenco (Singapore) Pte Ltd
18 Gul Crescent,
Singapore 629 527
Ph: + 65 6862 3388
Fax: + 65 6861 7575
Email: info@klenco-asia.com

AUSTRALIA:**For your nearest Australian Distributor/Service Agent contact:**

Pacvac Pty Ltd
182 Daly Street, Belmont, 6104
Western Australia, Australia
Ph: + 61 8 9479 1444
Fax: + 61 8 9478 5444
Email: sales@pacvac.com